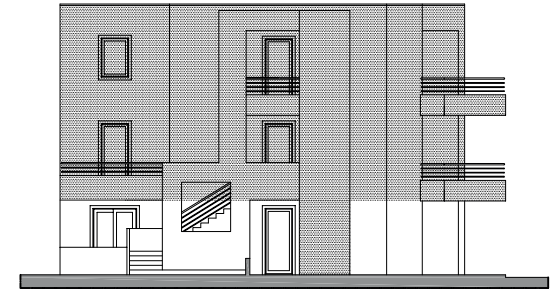
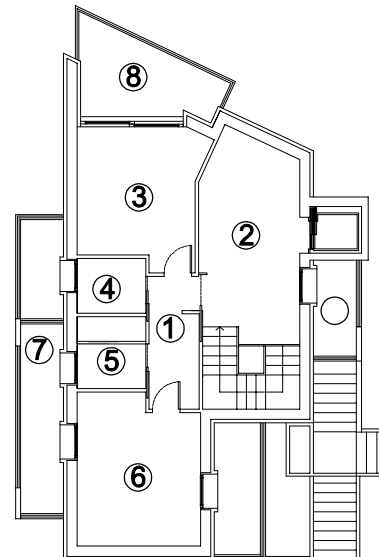


### EDIFICIO B PIANO PRIMO

- ① SOGGIORNO
- ② DISIMPEGNO
- ③ RIPOSTIGLIO
- ④ BAGNO
- ⑤ CUCINA
- ⑥ TERRAZZA
- ⑦ TERRAZZA
- ⑧ TERRAZZA
- ⓐ ASCENSORE PRIVATO

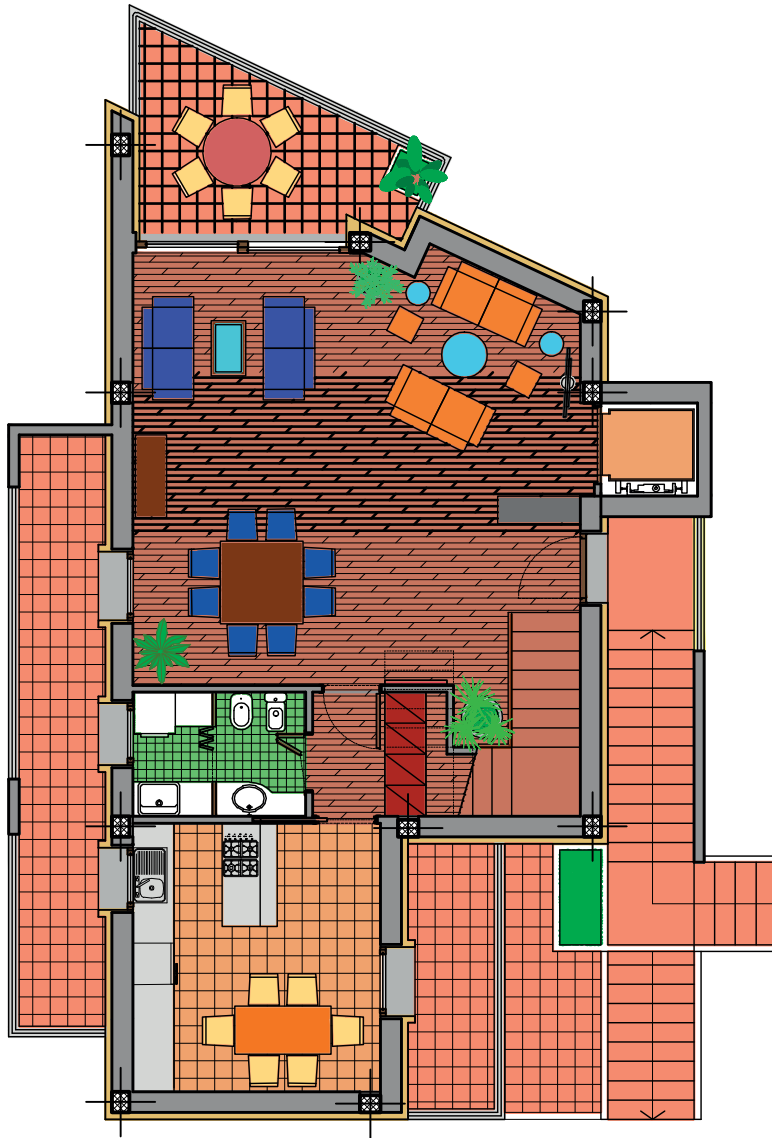


EDIFICIO B - PROSPETTO OVEST-V

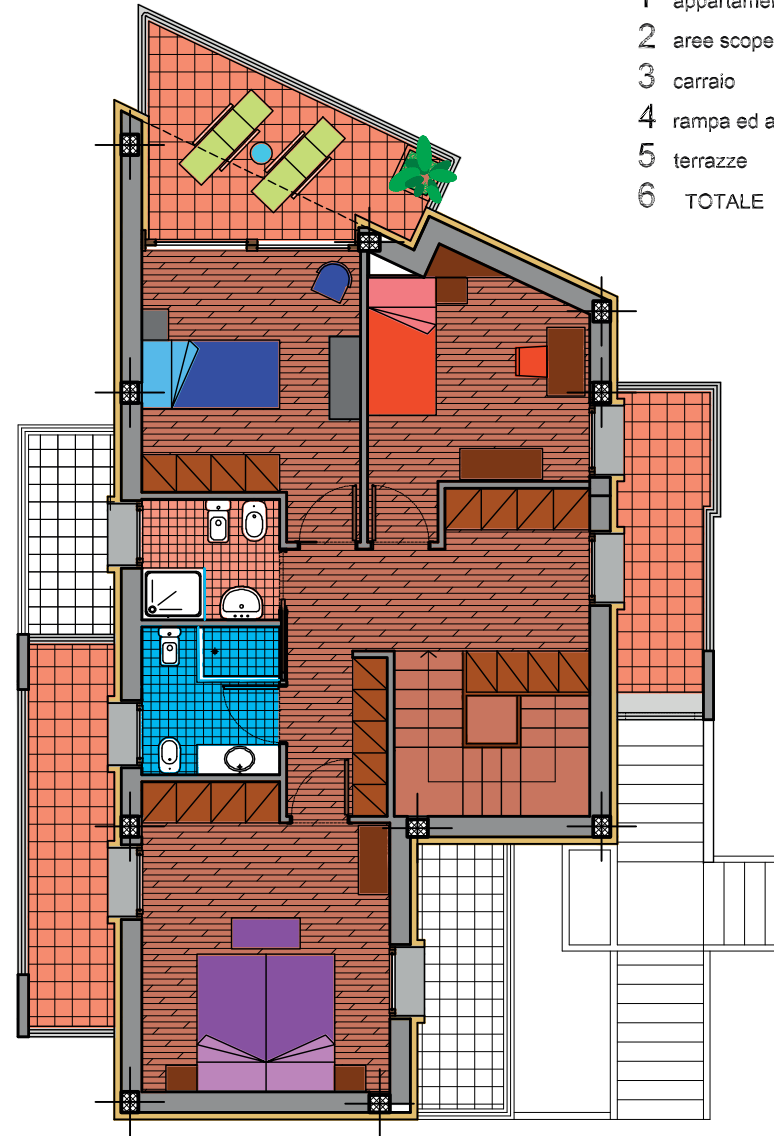


### EDIFICIO B PIANO SECONDO

- ① DISIMPEGNO
- ② STUDIO
- ③ CAMERA
- ④ BAGNO
- ⑤ BAGNO
- ⑥ CAMERA
- ⑦ TERRAZZA
- ⑧ TERRAZZA
- ⑨ TERRAZZA
- ⓐ ASCENSORE PRIVATO



PIANTA PIANO PRIMO



PIANTA PIANO SECONDO

1	appartamento	mq.	164.40
2	aree scoperte condominiali	mq.	$130.04 : 5 \times 0.1 = 2.60$
3	carraio	mq.	$74.12 : 5 \times 0.1 = 1.48$
4	rampa ed area di manovra	mq.	$66.40 : 5 \times 0.3 = 3.98$
5	terrazze	mq.	$51.73 \times 0.3 = 15.50$
6	TOTALE	mq.	187.96